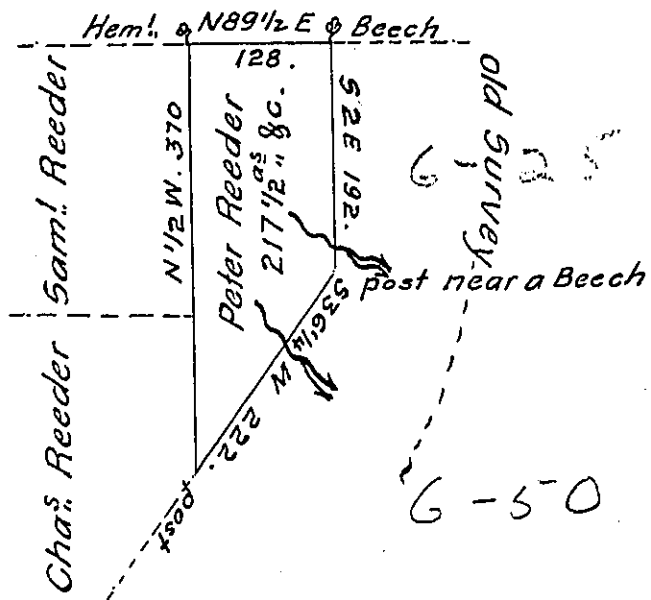


Vacant. ~
N-273



A Draught of a tract of land called _____ Situate in the County of Luzerne, Adjoining Charles Reeder & others, surveyed the 17th day of November 1792 for Peter Reeder in pursuance of a warrant bearing date the 3^d day of April 1792 Containing two hundred Seventeen Acres & a half & the allow^{ce} of Six % Cent. ~

To Danl. Brodhead Esq. }
Surveyor General. }

Anty. Grothers D.S.

IN TESTIMONY that the above is a copy of the original remaining on file in the Department of Internal Affairs of Pennsylvania, made conformably to an Act of Assembly approved the 16th day of February, 1833, I have hereunto set my Hand and caused the Seal of said Department to be affixed at Harrisburg, this twenty-seventh day of August 1906

Loach Brown
Secretary of Internal Affairs.